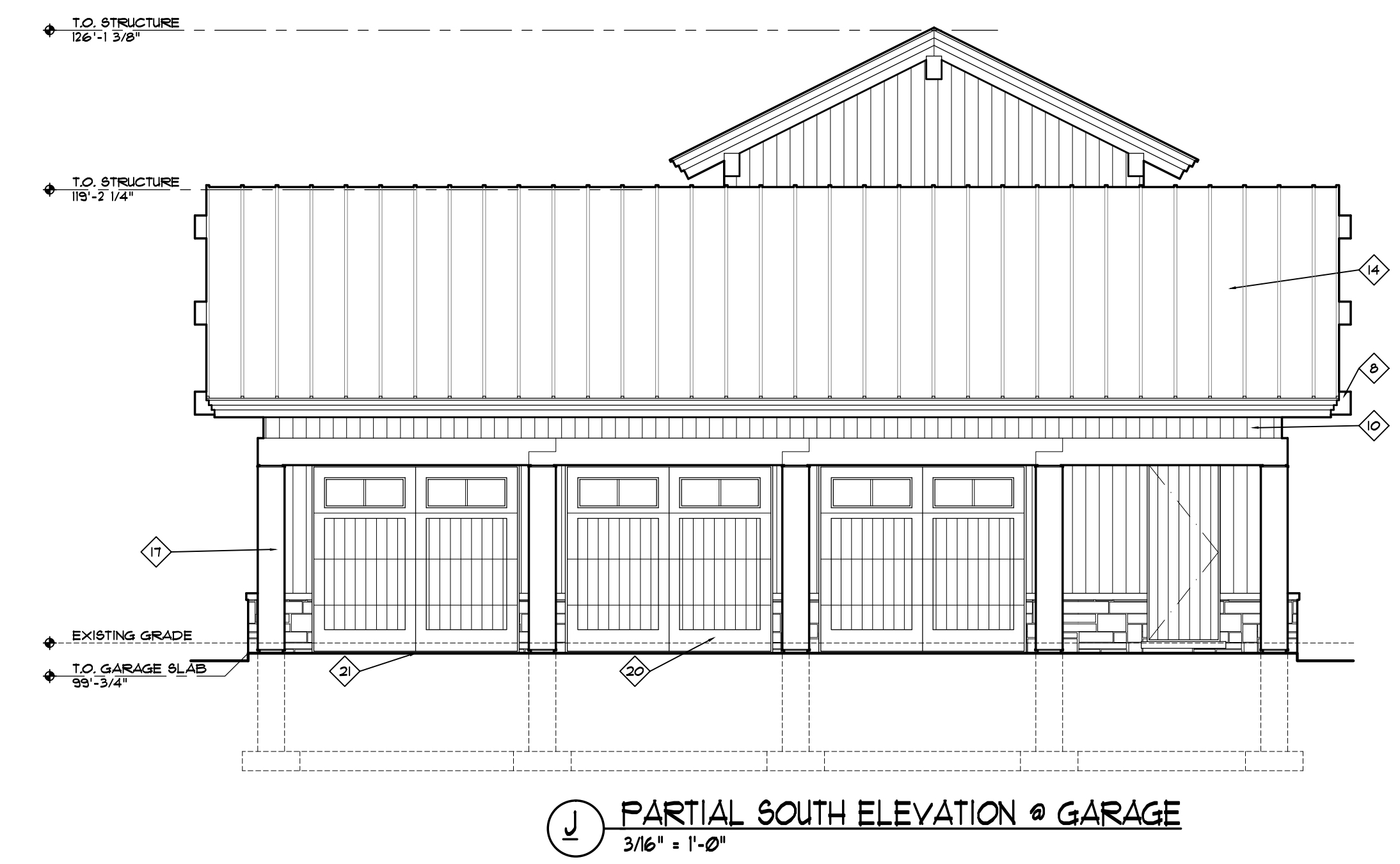
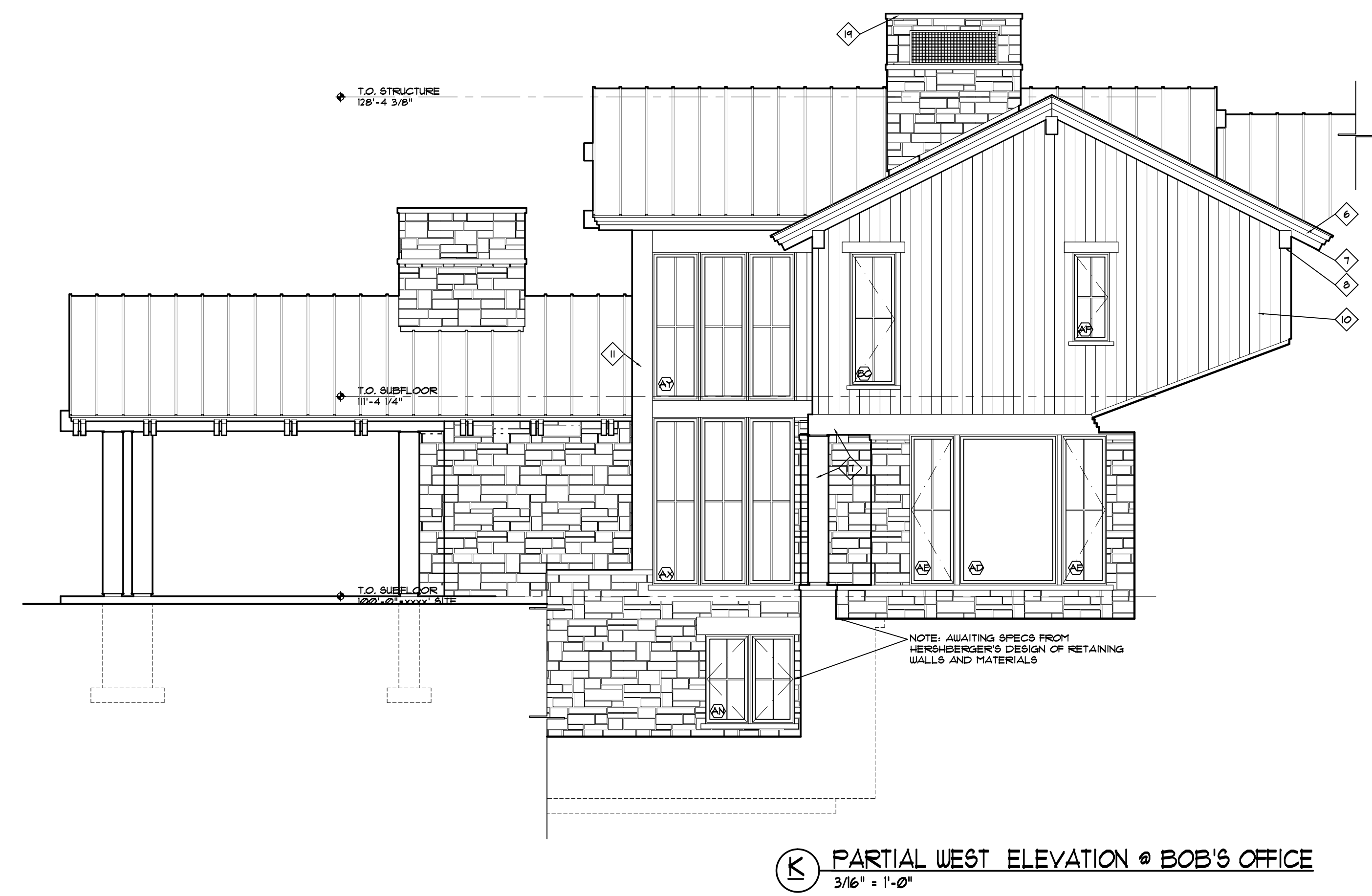


H PARTIAL EAST ELEVATION
3/16" = 1'-0"



J PARTIAL SOUTH ELEVATION @ GARAGE
3/16" = 1'-0"



K PARTIAL WEST ELEVATION @ BOB'S OFFICE
3/16" = 1'-0"



BOX 4119
JACKSON, WY 83001
307-733-5697
FAX 307-733-5761

MORSE RESIDENCE

6030 W. LAZY H ROAD
TETON COUNTY, WYOMING

STRUCTURAL ENGINEERS:
CAS STRUCTURAL ENGINEERS
1000 W. FALLS, IDAHO (208)523-6818

MECHANICAL/ELECTRICAL ENGINEERS:
CN ENGINEERS
JACKSON, WY 83001 (307)733-9765

Date:
CONSTRUCTION SET
06.19.2015

Revisions:
A 11.23.2015
B 10.09.2015

A-3.2
EXTERIOR ELEVATIONS